

ORIGINAL ARTICLE

Calculating interfractional prostate motion during radiation therapy course using fiducial markers

Petros Alexidis¹, Ioannis Tzitzikas², Konstantinos Hatzimouratidis³, Ioannis Chrisogonidis⁴

¹Department of Radiation Oncology, Papageorgiou General Hospital; Thessaloniki, Greece. ²Department of Radiation Oncology, AHEPA University Hospital of Thessaloniki, Faculty of Medicine, School of Health Sciences, Aristotle University of Thessaloniki, Greece. ³Department of Urology, Papageorgiou hospital of Thessaloniki, Faculty of Medicine, School of Health Sciences, Aristotle University of Thessaloniki, Greece. ⁴Department of Radiology, AHEPA University Hospital of Thessaloniki, Faculty of Medicine, School of Health Sciences, Aristotle University of Thessaloniki, Greece.

Summary

Purpose: In this study we evaluated the day to day prostate displacement during radiation therapy by using implanted radiopaque fiducials and daily image guided position verification.

Methods: The data of 10 patients that received radiation therapy to the prostate were analyzed. Three fiducial markers were implanted in the prostate before treatment initiation for everyday verification of the target's position. Daily X ray images (kilovolt/KV films) of the pelvis were acquired for verification and were matched with baseline images produced during treatment preparation using bony structures and fiducials as landmarks. We calculated the mean difference between the two methods and the prostate displacement derived from these measurements.

Results: A total of 208 KV films were obtained. Our results

showed a non-uniform prostate motion, with most of the displacements observed in the caudal direction followed by anterior, posterior, cranial, right and left. The mean target motion in each of the above directions was 3.5 mm, 3.5 mm, 3.3 mm, 3.9 mm, 2 mm and 2.4 mm. Based on the cumulative frequency of the target's displacement, a margin of 8 mm, 7mm, 5 mm, 4 mm, 9 mm and 7 mm in the anterior, posterior, left, right, cranial and caudal direction respectively would account for 95% of prostate's motion, provided that every day KV image guidance is performed.

Conclusion: A non-isotopic margin of 8 mm, 7mm, 5 mm, 4 mm, 9 mm and 7 mm around the prostate can be considered safe for treatment delivery.

Key words: fiducials, interfractional motion, prostate, radiotherapy

Introduction

Radiation therapy is among the most commonly used treatments for prostate cancer with disease control rates comparable to radical prostatectomy for all stages [1–3]. Additionally, modern radiotherapy techniques such as volumetric arc therapy (VMAT), have significantly reduced toxicity leading to excellent tolerability of the treatment by the patients [4–11]. Historically, safety margins were applied around the target (Planning Target Volume, PTV) in order to account for everyday variability of

the patient's positioning on the linear accelerator as well as for the day to day displacement of the prostate (interfractional movement) due to bladder and rectum filling [12–19]. The PTV margins reassure that the target will not be missed but they lead to more toxicity by increasing the size of radiation fields [20–23]. Advances in radiological imaging, have allowed for daily image guidance (Image Guided Radiation Therapy, IGRT) in order to verify the position of the prostate before treatment and thus

reduce the PTV margins. The variation in prostate's position during treatment is of great importance specifically in cases where port films or KV (kilo-voltage) images are used for the verification since prostate is not visible and bone structures are used as landmarks. In this study we intended to evaluate interfractional prostate movement and propose PTV margins to adjust for this target displacement.

Methods

This trial included patients with biopsy proven localized prostate cancer (cT1c-cT3bN0M0) that received radiation therapy only to the prostate (lymph node irradiation was not permitted), were 40 to 85 years old and had WHO performance status 0-2. Patients with a calculated risk of lymph node involvement $\geq 5\%$ [24] were excluded from the study, as were those with PSA level > 40 ng/ml, T3 disease and GS ≥ 8 , T3 disease and PSA ≥ 10 ng/ml and those with GS ≥ 8 and T3-T4 disease or PSA level ≥ 10 ng/ml. Any previous operations to the prostate or urinary bladder (history of prostatectomy, transurethral resection of bladder tumor (TURBT)), inflammatory bowel disease, hip replacement, previous irradiation of the pelvis were not allowed. All patients were staged with digital examination, prostate biopsy, PSA evaluation, and CT of the pelvis and abdomen. Pelvic MRI and bone scan were prescribed for patients with T3-T4 stage, PSA > 20 ng/ml or GS 8-9 or for those with symptoms.

In case of hormone therapy (androgen deprivation therapy, ADT), an LHRH analogue combined with initial anti androgen to reduce testosterone flair was given 2 months before initiation of radiotherapy. Patients received ADT for 6 months of 2-3 years according to risk group. Under transrectal ultrasound guidance, three radiopaque markers (fiducials) were implanted in the prostate, one in the apex and two in the base. The fiducials should be placed in such an arrangement that they are all visible in frontal (0 degrees) and lateral (90 degrees) X ray imaging. The day before implantation, patients were instructed to use an enema and receive 1000 mg of Kinolone. In case of use of anticoagulants, the medicine should be stopped 5 days before and replaced by heparin injections.

CT simulation was performed at least 5 days after fiducials placement by acquiring a 3 mm slice CT of the pelvis from L4 vertebra up to the ischial tuberosities. The patients were instructed to use an enema the night before simulation and the same day they should empty their bladder and drink 500 ml of water 45 min before CT scan (bladder filling protocol). The prostate with or without the seminal vesicles (SV) and normal tissues (organs at risk, OAR) were delineated. Decision on if and to which extend the SV would be treated was made according the calculated risk of involvement [25]. If the estimated risk was $< 10\%$, the prostate alone would be treated to a total dose of 72 Gy (2.25 Gy per fraction in 32 fractions), while for a calculated risk between 10-25%, the prostate together with the proximal 1 cm of the SV received the prescribed dose and the rest of the SV were treated to lower dose of 58.9 Gy (1.84 Gy/fr). Finally, if the risk was above 25% the prostate and the proximal

2 cm received 72 Gy. OAR included the femoral heads, penile bulb, bladder, bowel bag and rectum and mandatory dose constraints for these organs were defined. A planning target volume (PTV) of 10 mm in all directions and 5 mm posteriorly was used. To ensure minimum interfractional prostate motion, patients were instructed to follow the bladder filling protocol every day before treatment and received instructions regarding dietary management, fluid intake and laxative use.

Patients' position was evaluated daily before treatment by acquiring two X ray images (KV) of the pelvis in 0 and 90 degrees and two methods were used to match the KV images with the digitally reconstructed images (DRR) produced by the initial CT scan simulation. First, the matching was performed using bony landmarks of the pelvis and then a second registration followed using the fiducials before proceeding to treatment. The couch shifts in three axes (vertical, lateral and longitudinal) produced by the fiducials protocol relative to bone match were documented. The prostate motion was calculated by translating the couch shifts as follows: a positive shift in the vertical, lateral and long axes indicated a displacement in the anterior, left and cranial direction while negative values were indicative of posterior, right and caudal displacement.

Frequencies of the couch shifts in the three axis (vertical, long, lateral) were presented using percentages. The shifts were dichotomized into a new variable (shifts observed vs no shifts observed) and McNemars's test was used to compare frequencies between vertical, long and lateral axis. The level of significance was set to $\alpha = 0.05$. The calculated significance level of McNemar's test was adjusted using the Bonferroni's correction. Descriptive statistics of the displacements (in mm) in the anterior, posterior, cranial, caudal, left and right direction were presented using mean value with 95% confidence interval, range and standard deviation. For all 6 directions, the value of the empirical cumulative distribution function was calculated at the 95th percentile, providing an estimate of the margin around the target needed to cover 95% of displacements. Statistical analysis was performed using SPSS version 25. Therapy was delivered using the volumetric arc therapy (VMAT) technique. All patients provided written informed consent.

Results

Ten patients with localized prostate cancer were included in the study and a total of 208 KV films were taken. The most common couch correction using the fiducials protocol was observed in the vertical axis (87.5% of total cases) followed by long (64%) and lateral (34.6%) (Table 1). The frequency distribution of couch shifts in each axis is presented in Figure 1. McNemar's test showed a statistically significant difference in the shift frequency between vertical and lateral ($p < 0.001$) or long and lateral ($p < 0.001$), while no difference was observed between vertical and long ($p = 0.154$). The mean couch correction by fiducial usage relative to

bone match in the vertical, lateral and long axis was 0.51 MM (confidence intervals (CI) -0.1–10.2), -0.15 MM (CI (-) 3.6–(-)0.6) and -0.65 MM (CI (-)12.3–(-)0.7), respectively. The most common target displacement was towards the caudal direction (52.4%) followed by anterior (49.5%), posterior (38%), cranial (30.3%), right (22.1%) and left (12.5%) (Table 2). After considering only those cases that any motion was observed, the calculated mean displacement was 3.5 mm (CI 3.1–3.9) in the anterior direction, 3.3 mm posteriorly (CI 2.8–3.8), 2.4 mm left (CI 1.9–2.9), 2 mm right (CI 1.6–2.5), 3.9 mm cranially (CI 3.1–4.7) and 3.5 mm caudally (CI 2.9–4.1). Distributions are seen in Figure 2. Extremes of motion were rare in

the anterior and posterior direction, with only 1% and 1.3% of cases respectively presenting a target movement of ≥ 1 cm. In the cranial and caudal direction, the corresponding values were higher with 3.2% and 2.7% of cases presenting a displacement of ≥ 1.3 cm and 0.8 cm respectively. The highest rates of extremes were observed in the left (7.6% ≥ 0.5 cm displacement) and right direction (6.5% ≥ 0.4 cm displacement). Based on the cumulative frequency of the displacements observed, a margin of 8 mm, 7 mm, 5 mm, 4 mm, 9 mm and 7 mm in the anterior, posterior, left, right, cranial and caudal direction would be required in order to cover 95% of the interfractional motion

Table 1. Descriptive statistics of table shifts difference between bone match and fiducials in each axis

	N(%)	Mean (mm)	95% CI	SD	Range
Vertical	182 (87.5)	0.51	(-)0.1– 10.2	3.76	20
Longitudinal	172 (64)	-0.65	(-)12.3 – (-)0.7	4.25	35
Lateral	72 (34.6)	-0.15	(-)3.6 – (-)0.6	1.51	17

N: displacement count observed in the corresponding axis (number in parenthesis represents percentage of total observations), Mean represents the mean difference between the two matching protocols, CI: confidence intervals, SD: standard deviation

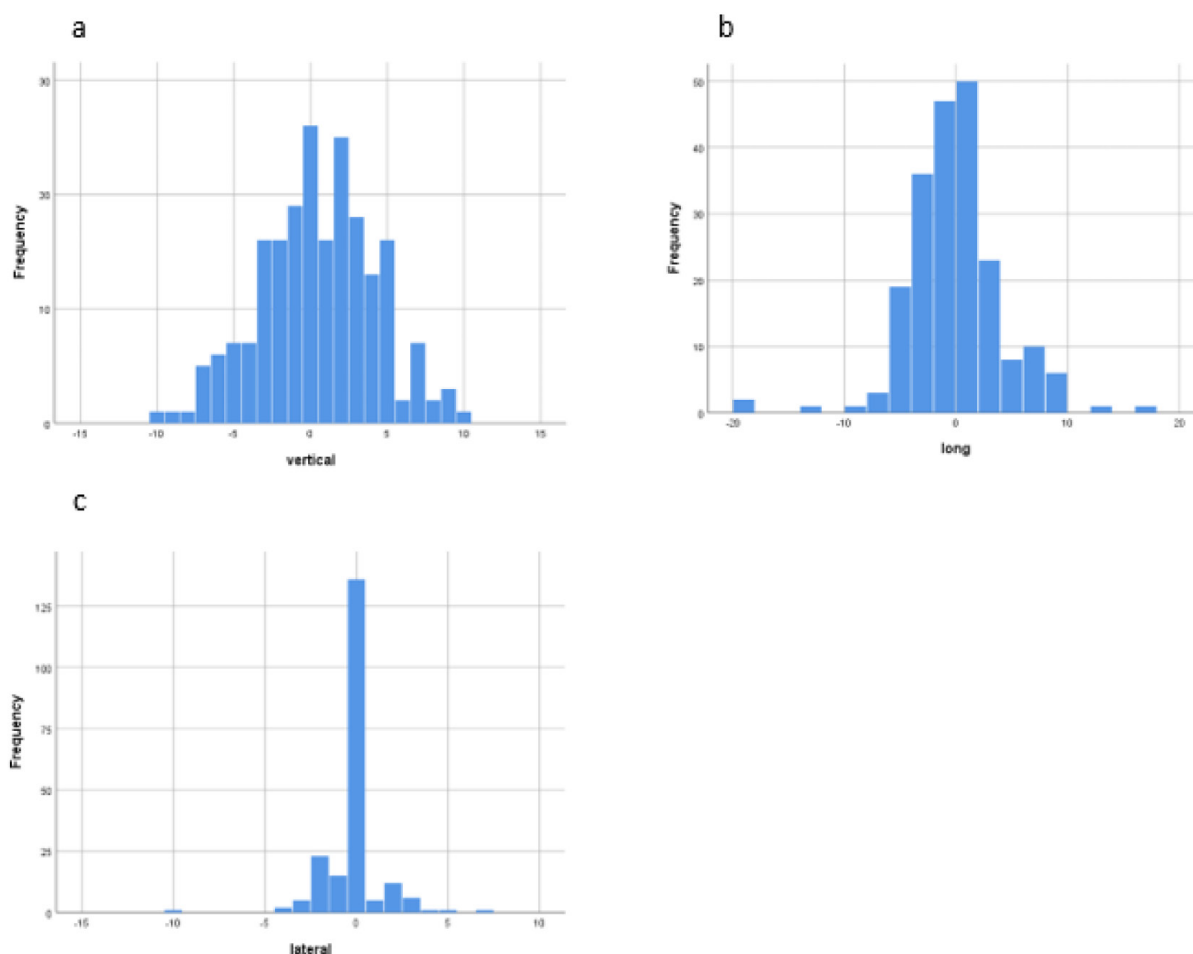
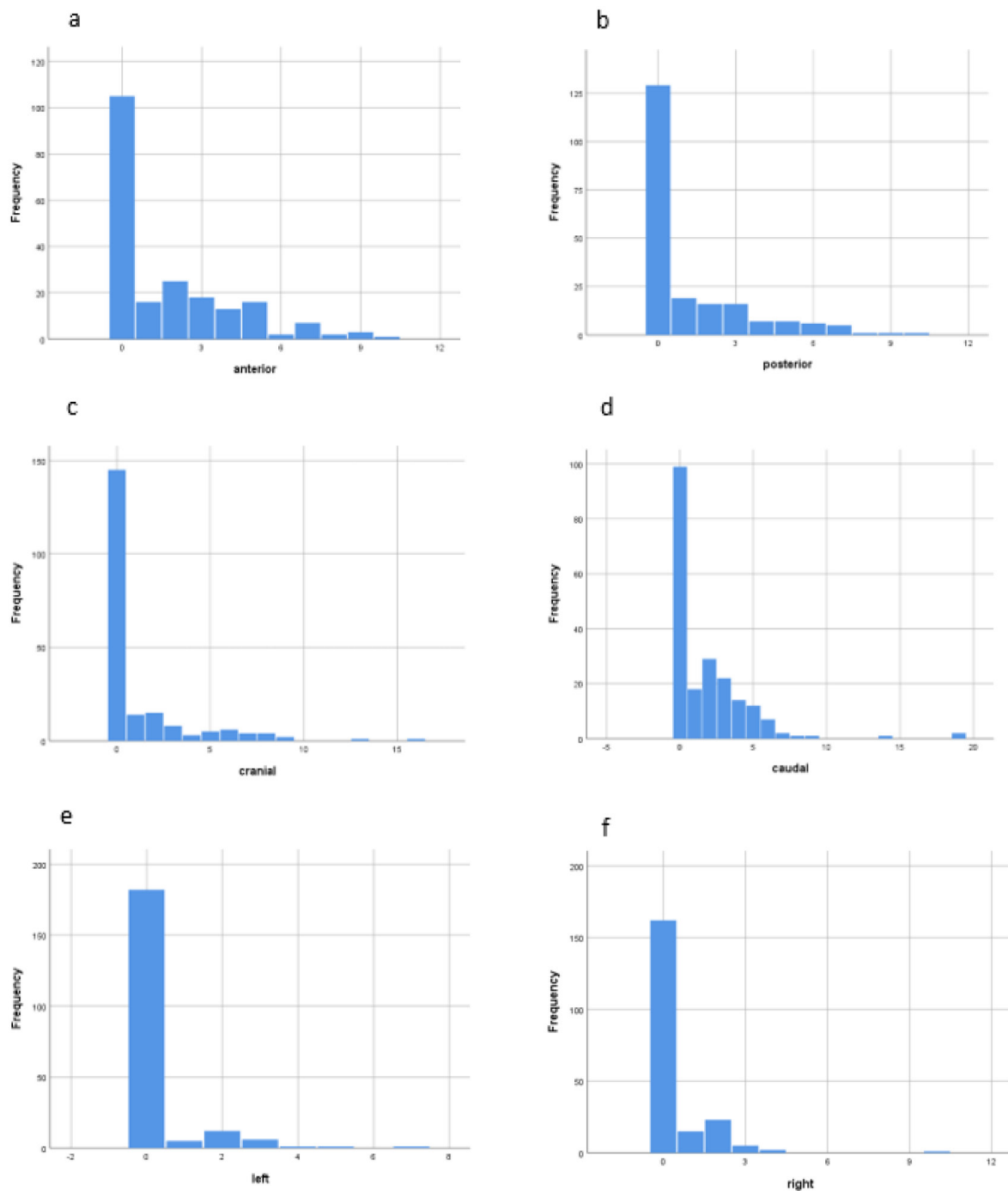


Figure 1. Frequency distribution of the displacements in (a) vertical, (b) long and (c) lateral axis.

Table 2. Descriptive statistics of prostate displacement in each direction

	<i>N (%)</i>	<i>Mean (mm)</i>	<i>95% CI</i>	<i>SD</i>	<i>Range</i>
Anterior	103 (49.5)	3.55	3.13-3.97	2.15	9
Posterior	79 (38)	3.29	2.81-3.78	2.16	9
Cranial	63 (30.3)	3.94	3.15-4.72	3.1	15
Caudal	109 (52.4)	3.51	2.96-4.07	2.92	18
Left	26 (12.5)	2.42	1.89-2.96	1.33	6
Right	46 (22.1)	2.04	1.62-2.47	1.43	9

N: displacement count observed in the corresponding direction (number in parenthesis represents percentage of total observations), CI: confidence intervals, SD: standard deviation

**Figure 2.** Frequency distribution of the displacements in (a) anterior, (b) posterior, (c) cranial, (d) caudal, (e) left and (f) right direction.

Discussion

In this study we found a mean prostate displacement of 3.5 mm, 3.3 mm, 3.9 mm, 3.5 mm, 2.4 mm and 2 mm in the anterior posterior, superior, inferior, left and right direction respectively. After comparing bone match and fiducials methods for image matching during setup verification, we found a mean difference in the table shifts between the two methods of 0.51 mm, -0.65 mm and -0.15 mm in the vertical, longitudinal and lateral axis, respectively. This study was conducted to estimate the interfractional motion of prostate and propose safety margins around the target to account for these displacements.

Modern radiotherapy and imaging methods have evolved dramatically allowing radiation oncologists to safely increase dose without harming the surrounding normal tissues [4–11]. This is particularly important since there are data in the literature supporting that dose escalation leads to better disease control [26–32]. Additionally, modern techniques have led to significantly less toxicity, while larger margins around the target volume and larger radiation fields have been associated with higher toxicity rates [20–23]. Consequently, defining PTV margins is of great importance in order to safely deliver radiation therapy. Balance should be kept though between minimizing toxicity and ensuring target coverage. Today, IGRT combined with high doses of IMRT therapy is the standard of care and verification protocols, including CT scans or X-ray images (Kilovoltage Imaging, KV) of the pelvis are used. The latter is frequently combined with fiducials markers to identify the target's position since prostate is not visible on those images. Some departments face difficulties in employing fiducial usage in every day clinical practice (lack of human or financial resources, difficulties in cooperation between departments) in which case, defining margins becomes a real challenge since bony landmarks are used as a surrogate for prostate position. Knowing the amplitude of prostate displacement between treatments is of great importance in order to safely apply margins and ensure target coverage. The margins proposed in this study would cover most of prostate's interfractional motion, given that everyday image guided radiation therapy with bone match is performed to account for day to day setup variation.

Some other studies in the literature have found similar results. Schallenkamp et al followed a similar methodology to our study by implanting fiducials to track prostate motion and found that the mean displacement in the superior-inferior, anterior-posterior and right-left direction was 2.5 mm, 3.7 mm and 1.9 mm respectively [33]. In another study, larger target movement was observed,

with mean values of 5.6 mm and 5.9 mm in the posterior and inferior direction respectively [34]. Additionally, a displacement bigger than 1 cm in the posterior and inferior direction was observed in 30% and 11% of the total cases, much higher than the rates observed in our study. The authors attributed this result to bladder and rectum filling and subsequent distension of those organs.

The important role of bladder and rectum filling to interfractional movement has been verified in a number of studies [35–38]. Schild et al [36] found a prostate displacement of up to 0.8 cm (median 0.2 cm) posteriorly due to bladder distension, while Ten Haken et al [35] observed that rectal distension with 60 cc of contrast resulted in an anterior-superior shift of the prostate of 0.5 cm mean value (range 0–2 cm). In another report by Melian et al [37], instillation of 30 cc of air into the rectum led to shifts in target of up to 30 mm anteriorly and superiorly and 1.5 cm laterally. This highlights the importance of keeping consistent rectal and bladder volumes as much as possible throughout the course of radiation therapy. We followed a strict protocol of bladder filling and dietary instructions which probably led to less frequent extremes of motion as well as to relatively small prostate displacements.

This study has limitations. We only used KV portals for imaging and not cone beam CT. Such an approach would offer us more accurate information on prostate movement as well as on target rotation. Moreover, we only observed fiducials shifts relative to bone match to define prostate motion, while other studies have also used the center of mass (COM) as a landmark. COM was defined as the center of a triangle created by the three fiducials. This method offers additional information regarding fiducials migration during treatment course and rotational shifts of the target due to bladder and rectal dilatation. Yet, our findings are consistent with other reports in the literature [34,39–42] and we believe they can be considered safe.

To conclude, Interfractional movement is an important factor for target coverage which should always be considered when planning the radiation therapy treatment for prostate cancer. The PTV margins applied around the target account for both interfractional movement and every day setup errors. To eliminate the latter, daily KV imaging with bone match should be performed. In that case a margin of 8 mm, 7 mm, 5 mm, 4 mm, 9 mm and 7 mm in the anterior, posterior, left, right, cranial and caudal direction would cover 95% of prostate displacements.

Conflict of interests

The authors declare no conflict of interests.

References

- Hamdy FC, Donovan JL, Lane JA et al. 10-Year Outcomes after Monitoring, Surgery, or Radiotherapy for Localized Prostate Cancer. *N Engl J Med* 2016;375:1415-24. doi:10.1056/NEJMoa1606220
- Reichard CA, Hoffman KE, Tang C et al. Radical prostatectomy or radiotherapy for high- and very high-risk prostate cancer: a multidisciplinary prostate cancer clinic experience of patients eligible for either treatment. *BJU Int* 2019;124:811-9. doi:10.1111/bju.14780
- Wolff RF, Ryder S, Bossi A et al. A systematic review of randomised controlled trials of radiotherapy for localised prostate cancer. *Eur J Cancer*. 2015;51:2345-67. doi:10.1016/j.ejca.2015.07.019
- Hanlon AL, Watkins Bruner D, Peter R, Hanks GE. Quality of life study in prostate cancer patients treated with three-dimensional conformal radiation therapy: comparing late bowel and bladder quality of life symptoms to that of the normal population. *Int J Radiat Oncol Biol Phys* 2001;49:51-9. doi:10.1016/s0360-3016(00)01365-1
- Jacobs BL, Zhang Y, Schroek FR, et al. Use of Advanced Treatment Technologies Among Men at Low Risk of Dying From Prostate Cancer. *JAMA* 2013;309:2587. doi:10.1001/jama.2013.6882
- Koper PC., Stroom JC, van Putten WL et al. Acute morbidity reduction using 3DCRT for prostate carcinoma: a randomized study. *Int J Radiat Oncol Biol Phys* 1999;43:727-34. doi:10.1016/S0360-3016(98)00406-4.
- Michalski JM, Bae K, Roach M et al. Long-Term Toxicity Following 3D Conformal Radiation Therapy for Prostate Cancer From the RTOG 9406 Phase I/II Dose Escalation Study. *Int J Radiat Oncol Biol Phys* 2010;76:14-22. doi:10.1016/j.ijrobp.2009.01.062
- Michalski JM, Winter K, Purdy JA, et al. Toxicity after three-dimensional radiotherapy for prostate cancer on RTOG 9406 dose Level V. *Int J Radiat Oncol Biol Phys* 2005;62:706-13. doi:10.1016/j.ijrobp.2004.11.028
- Michalski JM, Winter K, Purdy JA, et al. Toxicity after three-dimensional radiotherapy for prostate cancer with RTOG 9406 dose level IV. *Int J Radiat Oncol Biol Phys* 2004;58:735-42. doi:10.1016/S0360-3016(03)01578-5
- Michalski JM, Winter K, Purdy JA, et al. Preliminary evaluation of low-grade toxicity with conformal radiation therapy for prostate cancer on RTOG 9406 dose levels I and II. *Int J Radiat Oncol Biol Phys* 2003;56:192-8. doi:10.1016/s0360-3016(03)00072-5
- Michalski JM, Winter K, Purdy JA, et al. Trade-off to low-grade toxicity with conformal radiation therapy for prostate cancer on Radiation Therapy Oncology Group 9406. *Semin Radiat Oncol* 2002;12(1 Suppl 1):75-80. <http://www.ncbi.nlm.nih.gov/pubmed/11917289>. Accessed September 20, 2019.
- Bel A, van Herk M, Bartelink H, Lebesque J V. A verification procedure to improve patient set-up accuracy using portal images. *Radiother Oncol* 1993;29:253-60. doi:10.1016/0167-8140(93)90255-7
- Zeilefsky MJ, Crean D, Mageras GS et al. Quantification and predictors of prostate position variability in 50 patients evaluated with multiple CT scans during conformal radiotherapy. *Radiother Oncol* 1999;50:225-34. doi:10.1016/s0167-8140(99)00011-0
- Song PY, Washington M, Vaida F, et al. A comparison of four patient immobilization devices in the treatment of prostate cancer patients with three dimensional conformal radiotherapy. *Int J Radiat Oncol Biol Phys*. 1996;34:213-19. doi:10.1016/0360-3016(95)02094-2
- Rosenthal SA, Roach M, Goldsmith BJ et al. Immobilization improves the reproducibility of patient positioning during six-field conformal radiation therapy for prostate carcinoma. *Int J Radiat Oncol Biol Phys* 1993;27:921-6. doi:10.1016/0360-3016(93)90469-c
- Dawson LA, Mah K, Franssen E, Morton G. Target position variability throughout prostate radiotherapy. *Int J Radiat Oncol Biol Phys*. 1998;42:1155-61. doi:10.1016/s0360-3016(98)00265-x
- Jones D, Hafermann MD, Rieke JW, Vermeulen SS. An estimate of the margin required when defining blocks around the prostate. *Br J Radiol* 1995;68:740-6. doi:10.1259/0007-1285-68-811-740
- Catton C, Lebar L, Warde P et al. Improvement in total positioning error for lateral prostatic fields using a soft immobilization device. *Radiother Oncol*. 1997;44:265-70. doi:10.1016/S0167-8140(97)00061-3
- Bentel GC, Marks LB, Sherouse GW, Spencer DP, Anscher MS. The effectiveness of immobilization during prostate irradiation. *Int J Radiat Oncol Biol Phys* 1995;31:143-8. doi:10.1016/0360-3016(94)00351-K
- Aluwini S, Pos F, Schimmel E et al. Hypofractionated versus conventionally fractionated radiotherapy for patients with prostate cancer (HYPRO): late toxicity results from a randomised, non-inferiority, phase 3 trial. *Lancet Oncol*. 2016;17:464-74. doi:10.1016/S1470-2045(15)00567-7
- Aluwini S, Pos F, Schimmel E, et al. Hypofractionated versus conventionally fractionated radiotherapy for patients with prostate cancer (HYPRO): acute toxicity results from a randomised non-inferiority phase 3 trial. *Lancet Oncol*. 2015;16:274-83. doi:10.1016/S1470-2045(14)70482-6
- Datta NR, Stutz E, Rogers S, Bodis S. Conventional Versus Hypofractionated Radiation Therapy for Localized or Locally Advanced Prostate Cancer: A Systematic Review and Meta-analysis along with Therapeutic Implications. *Int J Radiat Oncol Biol Phys* 2017;99:573-89. doi:10.1016/j.ijrobp.2017.07.021
- Hoffman KE, Voong KR, Pugh TJ et al. Risk of Late Toxicity in Men Receiving Dose-Escalated Hypofractionated Intensity Modulated Prostate Radiation Therapy: Results From a Randomized Trial. *Int J Radiat Oncol Biol Phys* 2014;88:1074-84. doi:10.1016/j.ijrobp.2014.01.015
- Briganti A, Larcher A, Abdollah F, et al. Updated nomogram predicting lymph node invasion in patients with prostate cancer undergoing extended pelvic lymph node dissection: The essential importance of percentage of positive cores. *Eur Urol*. 2012;61:480-7. doi:10.1016/j.eururo.2011.10.044
- Tosoian JJ, Chappidi M, Feng Z et al. Prediction of pathological stage based on clinical stage, serum pros-

- tate-specific antigen, and biopsy Gleason score: Partin Tables in the contemporary era. *BJU Int*. 2017;119:676-83. doi:10.1111/bju.13573
26. Dearnaley DP, Jovic G, Syndikus I et al. Escalated-dose versus control-dose conformal radiotherapy for prostate cancer: long-term results from the MRC RT01 randomised controlled trial. *Lancet Oncol*. 2014;15:464-s73. doi:10.1016/S1470-2045(14)70040-3
 27. Denham JW, Steigler A, Joseph D et al. Radiation dose escalation or longer androgen suppression for locally advanced prostate cancer? Data from the TROG 03.04 RADAR trial. *Radiother Oncol*. 2015;115:301-7. doi:10.1016/j.radonc.2015.05.016
 28. Kuban DA, Tucker SL, Dong L et al. Long-Term Results of the M. D. Anderson Randomized Dose-Escalation Trial for Prostate Cancer. *Int J Radiat Oncol Biol Phys* 2008;70:67-74. doi:10.1016/j.ijrobp.2007.06.054
 29. Peeters STH, Heemsbergen WD, Koper PCM et al. Dose-Response in Radiotherapy for Localized Prostate Cancer: Results of the Dutch Multicenter Randomized Phase III Trial Comparing 68 Gy of Radiotherapy With 78 Gy. *J Clin Oncol* 2006;24:1990-6. doi:10.1200/JCO.2005.05.2530
 30. Pollack A, Zagars GK, Smith LG, et al. Preliminary Results of a Randomized Radiotherapy Dose-Escalation Study Comparing 70 Gy With 78 Gy for Prostate Cancer. *J Clin Oncol* 2000;18:3904-11. doi:10.1200/JCO.2000.18.23.3904
 31. Pollack A, Zagars GK, Starkschall G et al. Prostate cancer radiation dose response: results of the M. D. Anderson phase III randomized trial. *Int J Radiat Oncol Biol Phys* 2002;53:1097-105. doi:10.1016/s0360-3016(02)02829-8
 32. Zietman AL, DeSilvio ML, Slater JD et al. Comparison of Conventional-Dose vs High-Dose Conformal Radiation Therapy in Clinically Localized Adenocarcinoma of the Prostate. *JAMA* 2005;294:1233. doi:10.1001/jama.294.10.1233
 33. Schallenkamp JM, Herman MG, Kruse JJ, Pisansky TM. Prostate position relative to pelvic bony anatomy based on intraprostatic gold markers and electronic portal imaging. *Int J Radiat Oncol Biol Phys* 2005;63:800-11. doi:10.1016/j.ijrobp.2005.02.022
 34. Crook JM, Raymond Y, Salhani D, Yang H, Esche B. Prostate motion during standard radiotherapy as assessed by fiducial markers. *Radiother Oncol* 1995;37:35-42. doi:10.1016/0167-8140(95)01613-1
 35. Ten Haken RK, Forman JD, Heimbürger DK, et al. Treatment planning issues related to prostate movement in response to differential filling of the rectum and bladder. *Int J Radiat Oncol Biol Phys* 1991;20:1317-24. doi:10.1016/0360-3016(91)90244-x
 36. Schild SE, Casale HE, Bellefontaine LP. Movements of the prostate due to rectal and bladder distension: implications for radiotherapy. *Med Dosim* 1993;18:13-5. doi:10.1016/0958-3947(93)90021-k
 37. Melian E, Mageras GS, Fuks Z, et al. Variation in prostate position quantitation and implications for three-dimensional conformal treatment planning. *Int J Radiat Oncol Biol Phys* 1997;38:73-81. doi:10.1016/s0360-3016(97)00221-6
 38. Beard CJ, Kijewski P, Bussi  re M, et al. Analysis of prostate and seminal vesicle motion: Implications for treatment planning. *Int J Radiat Oncol Biol Phys* 1996;34:451-8. doi:10.1016/0360-3016(95)02081-0
 39. Wu J, Haycocks T, Alasti H, et al. Positioning errors and prostate motion during conformal prostate radiotherapy using on-line isocentre set-up verification and implanted prostate markers. *Radiother Oncol* 2001;61:127-33. doi:10.1016/s0167-8140(01)00452-2
 40. Malone S, Croke J, Roustan-Delattour N, et al. Postoperative radiotherapy for prostate cancer: A comparison of four consensus guidelines and dosimetric evaluation of 3D-CRT versus tomotherapy IMRT. *Int J Radiat Oncol Biol Phys* 2012;84:725-32. doi:10.1016/j.ijrobp.2011.12.081
 41. Kershaw L, van Zadelhoff L, Heemsbergen W, Pos F, van Herk M. Image Guided Radiation Therapy Strategies for Pelvic Lymph Node Irradiation in High-Risk Prostate Cancer: Motion and Margins. *Int J Radiat Oncol Biol Phys* 2018;100:68-77. doi:10.1016/j.ijrobp.2017.08.044
 42. Sheng Y, Li T, Lee WR, Yin FF, Wu QJ. Exploring the Margin Recipe for Online Adaptive Radiation Therapy for Intermediate-Risk Prostate Cancer: An Intrafractional Seminal Vesicles Motion Analysis. *Int J Radiat Oncol Biol Phys* 2017;98:473-80. doi:10.1016/j.ijrobp.2017.02.089